

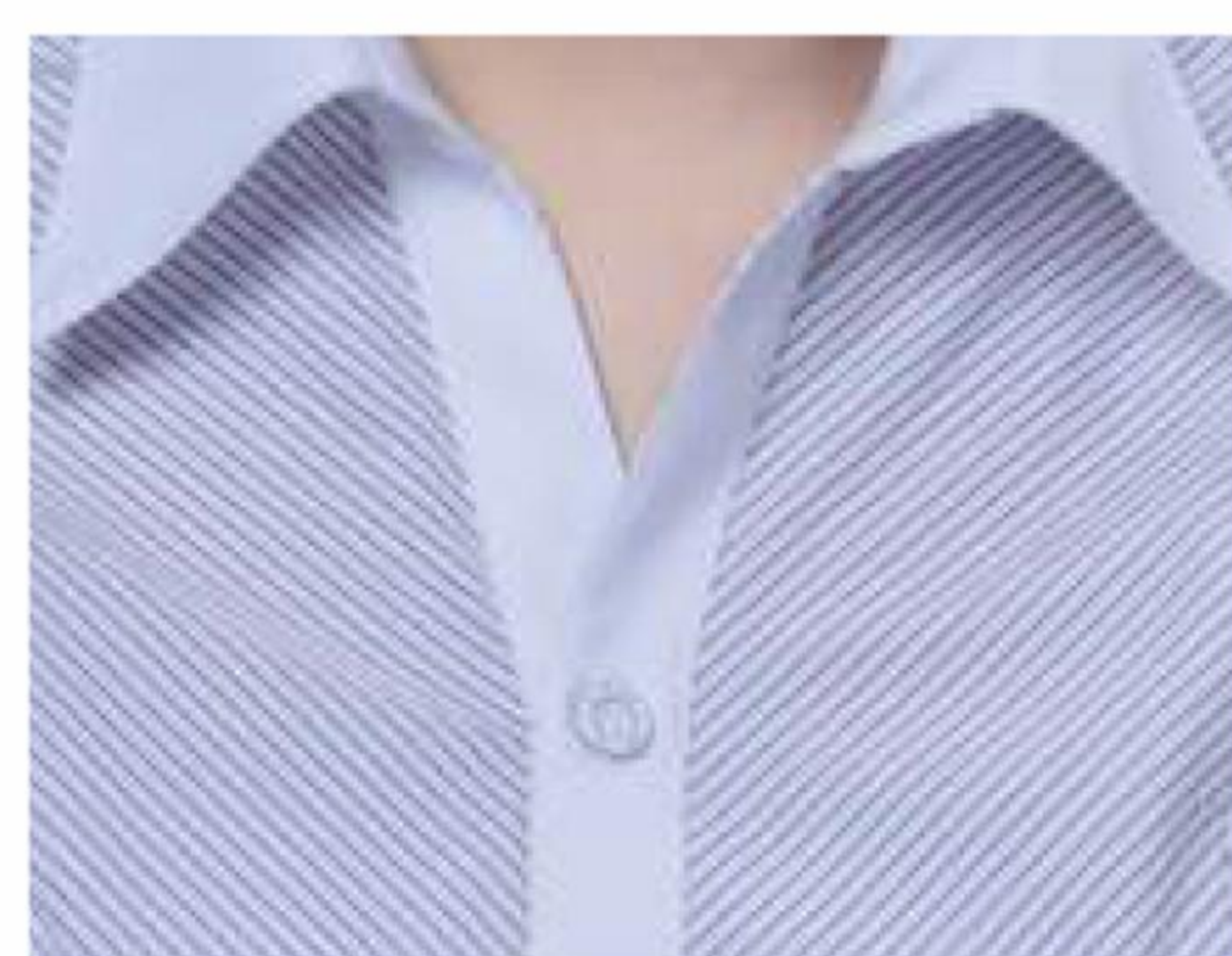
GEM 1377-E1/AK

钉扣机
Button Attaching Sewing Machine



本机防止脱线机能设为标准装备 (OFF/NO) 使缝制效果更结实, 美观。只需要调节操作杆就可以简单切换 □ 和X。

This machine prevents the off-line being set as standard equipment (OFF/NO) to make the sewing effect stronger and more beautiful. Adjusting the lever could switch between □ and X simply.



线迹图
Stitch Sample



线迹图
Stitch Sample

GEM 1377-E1/AK		⊖ ⊗ ⊖	TQX1 14#-20#	8/16/32	10-28	★	9	1500
GEM 373-E1/AK		⊖ ⊗ ⊖	TQX1 14#-20#	8/16/32	10-28	★	9	1500
GEM 1377		⊖ ⊗ ⊖	TQX1 14#-20#	8/16/32	10-28	—	9	1500
GEM 373		⊖ ⊗ ⊖	TQX1 14#-20#	8/16/32	10-28	—	9	1500

Contact